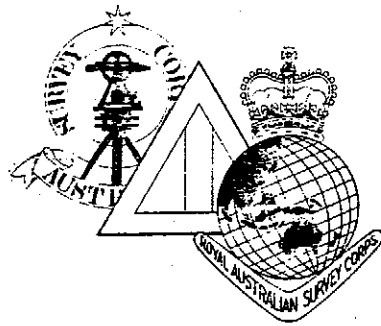


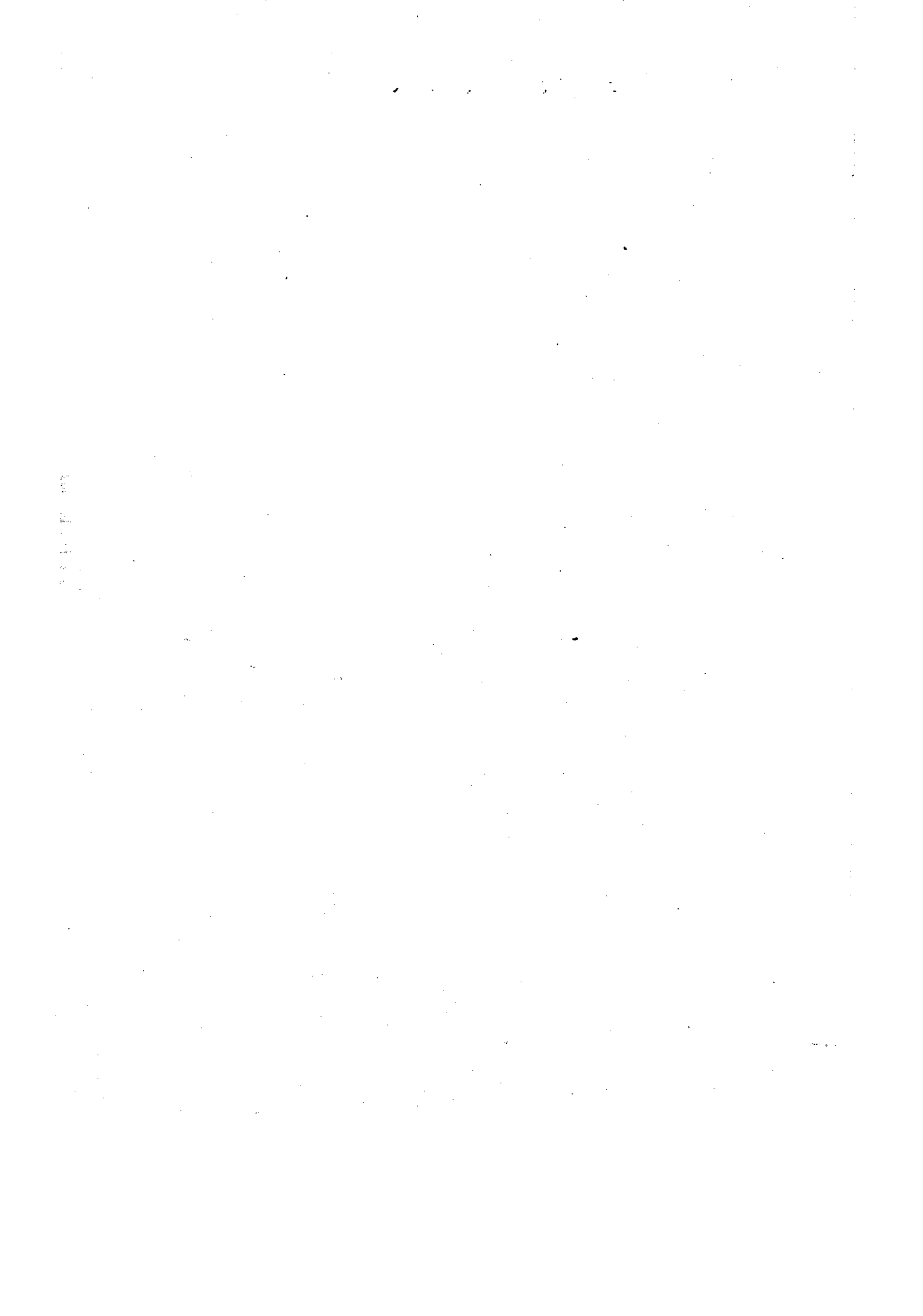
ROYAL AUSTRALIAN SURVEY CORPS ASSOCIATION
(WESTERN AUSTRALIA) INC

WEST LINK

MERRY XMAS AND A HAPPY NEW YEAR



ISSUE No.2
1990



CONTENTS

1. Senate- Royal Australian Survey Corps.
Notice of Motion.
 2. Executive page.
 3. Constitution.
 6. Foreword by Don Taylor.
 7. Vale, Bill Johnson. Lens Cap, Commemorative envelope.
 8. History of Western Command Field Survey Corps.
 9. Chapter 1. Prior to Federation.
 11. Chapter 2. Federation to Second World War.
 14. Present status of the Corps Units in WA.
 17. Miscellaneous Matters from the President.
 18. Personnel News.
 19. Personal Glimpses by Frank Cohen.
 20. Roll Call at the 1990 Annual get together.
 21. Alan by Jo Mazzarol.
 25. 75th Annual Dinner, from the President.
 26. Dinner photographs.
 32. Schindler's Ark, by Thomas Keneally.
 33. Member's List.
 35. Veteran Affairs News Release.
- Back. Application for Membership.



COMMONWEALTH OF AUSTRALIA

PARLIAMENTARY DEBATES

SENATE

Daily Hansard

THURSDAY, 31 MAY 1990

ROYAL AUSTRALIAN SURVEY
CORPS

Notice of Motion

Senator MacGIBBON (Queensland)—I give notice that, on the next day of sitting, I shall move:

That the Senate—

- (a) notes that 1 July 1990 marks the 75th anniversary of the foundation of the Royal Australian Survey Corps which produces maps and aeronautical charts required by Australia's defence forces;
- (b) notes that from the time of the explorer Sir Thomas Mitchell, Surveyor General of NSW, who as a Lieutenant on Wellington's staff served as a surveyor in the Peninsular War, military surveying has played a vital role in the mapping of and development of Australia;
- (c) acknowledges the Corps' contribution to the knowledge of Australia's geography, topography and environment;
- (d) notes that the Royal Australian Survey Corps, with its high level of professionalism, has served Australia well in war and in peace;
- (e) acknowledges the valuable mapping service rendered to New Guinea, Indonesia, and the south west Pacific by the Survey Corps as part of Australia's overseas aid program; and
- (f) congratulates the Royal Australian Survey Corps on its meritorious achievements through the 75 years of its existence.

**ROYAL AUSTRALIAN SURVEY CORPS ASSOCIATION
(WESTERN AUSTRALIA) INC**

EXECUTIVE OFFICERS (Honorary)

President. Don Taylor
22 Callistemon St. Greenwood WA 6024 tel. 447 0465

Vice President. Ray Sargeant
10 Paris Way Karrinyup WA. 6018 tel. 445 3995

Secretary/Treasurer. Barry Parker
75 Simpson Drive Padbury WA 6025 tel. 401 3857

Committee.

Pat Wood
39 Hendon Way Hamersley 6022 tel. 342 8981

Cedric Clutterbuck
18 Glennon Way Rossmoyne WA 6155 tel. 457 4651

Eric Clutterbuck
4 Carob Place Greenwood WA 6024 tel. 342 2181

Editor.

Jo Mazzarol
52 Cleveland St. Dianella WA 6062 tel. 276 6170

WEST LINK. Official Association Journal

Membership 62

Distribution. WA 63

Copy to; Western Australia History Collection, Battye Library.

WEST LINK. Issue No 2. 1990-91

THE ROYAL AUSTRALIAN SURVEY CORPS ASSOCIATION
(WESTERN AUSTRALIA) INC

CONSTITUTION

NAME. The name of the Association is "The Royal Australian Survey Corps Association (Western Australia) Inc".

DEFINITIONS. "The Association" means "The Royal Australian Survey Corps Association (Western Australia) Inc."

"RA Svy" means "The Royal Australian Survey Corps".

"WRAAC" means "Women's Royal Australian Army Corps"

"The Committee" means "The Committee of the Royal Australian Survey Corps Association (Western Australia) Inc".

OBJECTIVES. The objectives of the Association are:

1. To foster the spirit of friendship formed during service with the RA Svy.
2. To preserve the memory of comrades who have died.
3. To aid the sick, wounded and necessitous members and ex members of the RA Svy.
4. To promote amongst members the highest degree of citizenship and to serve Australia in peace and war.
5. To arrange periodical reunions of members.
6. To provide facilities for obtaining and affording of advice and information in the interests of members and/or ex-members of the RA Svy and/or their dependents and the dependents of deceased members or ex-members.
7. To assist and co-operate with kindred organisations.
8. To take an active interest in the RA Svy.
9. To co-operate with any association or body whether corporate or not, in the Commonwealth of Australia and Territories thereof formed by members of RA Svy and having objects the same as or similar to those of this Association.

POWERS. The Association has the power to do all things as are necessary, incidental or conducive to the attainment of all or any of its objects.

NON PROFIT. The income and property of the Association shall be applied solely towards the promotion of the objects of the Association.

No portion of the income or property shall be paid, transferred or distributed directly or indirectly to the members of the Association, provided that nothing shall prevent the payment in good faith of remuneration to any officer or employee of the Association or to any person other than a member, in return for services rendered to the Association

DISSOLUTION The Association may be dissolved or wound up by a resolution at any General Meeting or at a Special General Meeting called for such a purpose. If upon the dissolution or winding up of the Association there remains, after the satisfaction of all its debts and liabilities, any property whatsoever, the same shall not be paid to, transferred or distributed amongst the members of the Association. It shall be given to some other Association, body of Institution having objects similar, wholly or in part, to the objects of the Association, as determined by the members of the Association at or before the time of dissolution or winding up. In default of any such resolution, the decision for distribution shall be determined by a Judge of the District Court.

MEMBERSHIP. The following persons shall be eligible for membership of the Association

1. Members of the Australian Survey Corps and RA Svy who have served therein for at least six months and who were not dishonourably discharged.

2. Members of the WRAAC and other Corps who have served with RA Svy or Australian Survey Corps units for at least six months and who were not dishonourably discharged.

3. Such members of any Allied Force of Ancillary Service as may be approved by the Committee.

4. Members of the Public Service of the Commonwealth of Australia who have been employed on the establishment of an RA Svy unit for not less than six months.

5. Persons with exceptionally strong and close affiliation with RA Svy as may be recommended by the Committee and approved by a General Meeting.

APPLICATION FOR MEMBERSHIP. Any person wishing to become a member of the Association must apply in writing and the application shall be considered by the Committee which may accept or reject it. On payment of the subscription, hereinafter provided, such person, if accepted by the Committee, shall become a member.

EXPULSION. The Committee may expel a member whose conduct has been contrary to the best interests of the Association. The member's alleged conduct shall be investigated at a meeting of the Committee especially called for the purpose and the member has the right to be present and to be heard.

APPEAL AGAINST EXPULSION. A member who has been expelled by the Committee may request, in writing that, The Committee call a General Meeting to which he may appeal against the decision. The Committee shall call a General Meeting for this purpose for a day not more than twenty-eight (28) days after receiving such a request.

OFFICERS. The officers of the Association are the President, Vice-President, Secretary and Treasurer, each of whom shall be elected at the Annual General Meeting.

MANAGEMENT. A Committee shall conduct the day to day affairs of the Association.

COMMITTEE. A Committee shall consist of the President, Vice-President, Secretary, Treasurer and not less than two or more than six members who shall also be elected at the Annual General Meeting.

QUORUM. One-third of the Committee membership shall form a quorum and questions shall be decided by a simple majority of votes. The President having a casting as well as a deliberative vote.

COMMITTEE MEETINGS. The President or Vice-President shall summon meetings of the Committee.

CASUAL VACANCIES IN COMMITTEE. Should a casual vacancy occur in the Committee the remaining members of the Committee may fill the position by co-opting a member.

SUBSCRIPTIONS. The Annual Subscription payable by each member shall be such amount as is fixed at the Annual General Meeting. It shall be payable on the first day of April in each year. A member whose subscription is more than twelve months in arrears shall cease to be a member.

ACCOUNTS AND AUDIT. The Treasurer shall prepare the usual Accounts and Balance Sheet for the period, 1st January to 31st December in each year which shall be submitted to the Auditor in sufficient time for his report thereon to be made to the Annual General Meeting.

ANNUAL GENERAL MEETINGS. An Annual General Meeting of members shall be held during March each year. At that meeting the members shall receive the President's report, the Accounts and Auditor's report thereon and shall elect the Officers of the Association, members of the Committee and Auditor for the ensuing year.

GENERAL MEETINGS. The Committee may summon a General Meeting at any other time and shall do so for a day not more than twenty-eight days after receiving a written request to do so signed by at least one-third of the membership.

QUORUM AT GENERAL MEETINGS. At any General Meeting ten members shall form a quorum.

ALTERATION OF THE CONSTITUTION. This constitution may be altered by resolution of a General Meeting (notice having been given) and passed by at least three-quarters of the members present and voting.

COMMON SEAL. The Common Seal of the Association engraved with the name of the Association shall be kept in the care of the Treasurer. The Seal shall not be used or affixed to any deed or other document except pursuant to the resolution of the Committee and in the presence of the President and two members of the Committee both of whom shall subscribe their names as witnesses.

FOREWORD

As the end of 1990 approaches I would like to thank members and their partners for the support that has been given to the Association during the year.

The numbers that we have attained at our functions is most encouraging and I look forward to your continued support during 1990.

I would also like to express my appreciation to the ARA and ARes members of the unit who also supported our activities particularly on Anzac Day when the ARes members swelled our ranks for the march.

I also express gratitude to the unofficial 'Ladies Auxilliary' who have assisted with catering and the organisation of functions and assure the Ladies that their efforts are appreciated.

1990 has seen great changes within the Royal Australian Survey Corps. With the disbanding of 5 Fd Svy Sqn, the changes have particular meaning in WA and to our Association. We, the members, must now be prepared to bear more responsibility for promoting the Corps and its history within WA.

This can be achieved by showing genuine interest in the Association and its ideals and to take every opportunity to boost our membership numbers.

I am confident that our Association can prosper and become a rallying organisation for all ex Corps members within this State.

The committee wishes to extend to members and their families our best wishes for Xmas and the New Year.

D Taylor.
President.

VALE

BILL JOHNSON

Colonel H.A. (Bill) Johnson died on 14th September 1990. Others more knowledgeable will write of his long service to the Corps and Survey in the Middle East and throughout Australia and New Guinea

Serving under Col Johnson at the School from 1952-1954, it did not take long to discover his total dedication to his profession. While he obviously preferred to be in the field, his time at the School without doubt had a major influence on the post-war standards of the Corps.

The sight of his office lights ablaze as he wrote vital Corps training manuals, together with his midnight enjoiners to students, "Don't work too late gentlemen", will be remembered by many.

The emphasis he placed on practical skills produced graduates with a firm base on which to build the more readily absorbed theory.

The man has gone but he leaves behind much of his skill, knowledge and desire to achieve excellence.

Hugh Taylor

COMMEMORATIVE ENVELOPE STAMPED RA SVY 75TH ANNIVERSARY

A suggestion has been made, that in the illustration of the theodolite on the envelope, a dust cap appears to be covering the object lens.

The instrument illustrated is a Kern DKM 3A theodolite with a broken telescope, designed for high order astronomical observations. The observed image is deflected at right angles by a prism in the telescope to the eyepiece at the side of the theodolite. The observer in this case is sighting to an object to his left hand side.

The first DKM 3A was received by the School of Military Survey in either 1963 or 1964. I remember using it at Balcombe when on the staff there. It was a good instrument to use although I personally never really mastered the technique of tracking stars with the impersonal micrometer. With more practice I would have ultimately achieved smooth and regular contact times.

Pat Wood

PREFACE

0.1 To successfully plan, execute and co-ordinate military operations, current and complete knowledge of the geography of the interested area is essential. The traditional base for this information is the topographical map, which has been increasingly supplemented during this century by terrain models and aerial photography products. Presently, development in Digital Mapping, Remote Sensing and Computer based data banks are having a dramatic influence on the presentation of topographic information. These developments are for future record; for the past and present, the map sheet is the predominant vessel for topographical detail.

0.2. The overall defence requirement dictated a wide range of map coverage and scales, normally, from the large scale of 1:25,000 to the small scale of 1:1,000,000 with, prior to 1956, the common intermediate scales of 2 Inches to a Mile, (1:31,680), 1 Mile to an Inch (1:63,360), 4 Miles to an Inch (1:253,440) and 8 Miles to an Inch (1:506,880). Since then, the intermediate metric scales are commonly 1:50,000, 1:100,000, 1:250,000 and 1:500,000 respectively. The larger scale series usually imply field survey and original compilation. The smaller scale series are end products of the large scale maps and may often be based on other available material and resources. In some highly developed countries, such available map material can readily be recast into the format of the military series, however, in Australia the Defence Force from its inception has had to raise and maintain its own survey and mapping organization in both Peace and War.

0.3. When the Australian Army was established after Federation, Australia was divided into Military Districts for Command and Administration purposes. The 5th Military District covered the whole of the State of Western Australia. In October 1939, during World War 2, the District was re-designated as Western Command until April 1942, when all army units in WA came under the control of the 3rd Australian Corps, with the District being designated the WA Lines-of-Communication Area. In 1944 the District was re-designated as Western Command, reverting back to the 5th Military District in 1972 as part of a major re-organisation of the Department of Defence. In 1983 the Shires of Broome, West Kimberley, Wyndham-East Kimberly and Halls Creek were transferred from the administration on the 5th. to the 7th. Military District.

0.4. The Cocos (Keeling) Islands were transferred from the jurisdiction of the United Kingdom to that of Australia in

November 1955. Christmas Island was also transferred to Australia on 1st October 1958. Originally intended to be a record of Army "Survey" activities in the 5th Military District, the following narrative is more correctly a brief history of Army participation in the topographical mapping of Western Australia and the Indian Ocean Territories of Christmas and the Cocos Islands.

Chapter 1. PRIOR TO FEDERATION

1.1. The first military Presence in Western Australia occurred when Lieutenant-General Sir Ralph Darling, Governor of New South Wales, sent Nafor Edmund Lockyer with a detachment of one other officer, 18 rank and file, and 20 convicts to establish a settlement at King George' Sound in 1826. Originally named Fredrickstown, the settlement was located within the present Town of Albany, to forestall any attempt by France to take possession of the Sound. The Sound was undoubtedly the best of the known anchorages in the South Western coasts of New Holland. Several exploratory excursion into the hinterland, mainly north and west of the settlement, were made over the period 1827-30 by officers of the detachment.

1.2. The Royal Australian Survey Corp's ancestral organisations prior to the latter part of the 19th century were the Corps of Royal Engineers (Officers) and the Royal Sapper and Miners (Rank and File). The first sappers to serve in Western Australia were Corporal Richard Auger, John Coles and Private Mustard of the Royal Sappers and Miners. They were members of Lieutenant George Grey's expedition which was commissioned to explore the North West Coast of Western Australia in 1837. On completion of Sturt's expedition down the Murray River, a theory in London, suggested that a similar river system in the North West of Australia may exist. Lord Glenelg, the Secretary of State for the Colonies, approved a request from Grey and a fellow Infantry officer, Lieutenant Lushington, to undertake an exploration of the West Coast, north of Perth. The Expedition started inland from Hanover Bay on 29th January, 1838. After exploring the Glenelg and Prince Regent Rivers under difficult conditions, during the height of the wet season, the party departed for Mauritius on 17th April 1838.

1.3. In 1839 Grey, now promoted to Captain, undertook a second expedition along the coast, north of Perth. Landing at Shark's Bay, he discovered the Gascoyne River, but after his provisions were lost in a storm and his boats wrecked in heavy surf, the party had to walk back to Perth. This trek through arid and desolate country was a remarkable feat of human endurance. Grey had nothing but praise for the sappers, particularly Corporal Coles who was virtually his personal assistant. Corporal Auger showed himself to be a "jack of all trades-mechanic and architect, mender of boats, millwright and armourer." None of the

sappers were previously in exploration work. Grey later became, in turn, Governor of South Australia, Cape Colony and New Zealand, where he finally settled and became Premier.

1.4. Although the settlement at King Georges Sound was manned by convicts, the Swan River settlement, established in 1829, and subsequent settlements were intended to be completely inhabited by free migrants from England. However, shortage of labour, both unskilled and in some skilled trades, was hindering development of the Colony on both the private and Government sectors. After considerable pressure, particularly from the landowners, and in spite of the abolition of convict transportation to most other Colonies, the Secretary of State for the Colonies, approved the transportation of convicts to Western Australia. Captain E.Y.W. Henderson, Royal Engineers, had just completed a posting with the Survey of the United States-Canada Border and of a proposed railway line between Halifax and Quebec. He was appointed Comptroller-General of Convicts and Chief Royal Engineer of the Colony of Western Australia. Henderson and his party of a Sergeant and four Privates of the Royal Corps of Sappers and Miners, seventy Military Pensioners, sent as a guard, 150 convicts and a number of wives and children reached Fremantle on 1st June, 1850. Henderson's instructions prescribed that his first duty was to find temporary accommodation for the convicts and their guards, after which he was to build a permanent depot, only then was he to deploy the convicts to the construction of roads, harbours and the improvement of navigation. The sappers were not to be disciplinary warders, but to supervise works. In order to invest them with authority they were termed "instructioning warders".

1.5. It is interesting to note that only eight kilometres of cleared road-not paved or drained-and one bridge and one causeway existed in the Colony. This, after twenty one year's of settlement. Governor Fitzgerald was very impressed with the expertise and diligence of the "instructing warders". In his first half-yearly report on Capt. Henderson's activities, he strongly recommended that as the establishment of convicts was increased, that another detachment of intelligent non-commissioned officers of the Sappers should be sent to the Colony. As a result of this request, the 20th. Company, Royal Sappers and Miners, commanded by Lieutenant H. Wray RE, with a strength of 95 men and accompanied by 40 women and children arrived in Fremantle over the period of December 1851/January 1852. Capt Henderson sent Second Lieutenant Du Cane to Guildford to take charge of works in the districts East of Perth, Second Lieutenant Crossman to King George's Sound. Lieutenant Weay was in charge of the major works at Fremantle. During 1852 instructors from the Company were stationed at convict depots at North Fremantle, Mount Eliza, Guilford,

York, Toodyay, Bunbury and Albany. The 20th. Company remained in Western Australia until April 1862. Many of the sappers took their discharge in the Colony and when the Unit returned to England it only numbered thirty seven men. The Company was involved in the construction of the Fremantle Prison (still used as a Prison in 1989), many other buildings in Perth and Fremantle, the bridge over the Swan at North Fremantle, lighthouses, schools, and Fremantle lunatic asylum, jetties and roads throughout the Colony.

1.6. It could be argued that the convict era has little relevance to the Survey Corps, however, since 1973 the uniformed Engineer Surveyor in the Army belongs to the Royal Australian Survey Corps and undoubtedly the RE Officers and some of the NCO's from the Royal Corps of Sappers would have carried out survey tasks as Part of their duties.

Chapter 2. FEDERATION TO THE SECOND WORLD WAR.

2.1. After Federation the Defence Act of 1903 established the Defence Forces of Australia to comprise two branches namely the Permanent Forces and the Citizen Forces. In peace time the Permanent Forces raised were to be restricted to certain specified Arms and Services of which "Survey" was included. As part of the Citizen Forces the establishment of the Australian Intelligence Corps was approved in 1907 and part of its role was the preparation of strategic and tactical maps and plans.

2.2. It soon became apparent, due to the lack of technically trained personnel and the limited effort available from part time military service, that the task was beyond the capabilities of the Citizen Forces. On the advice of Colonel Charles Close RE, head of the Geographical Section of the British War Office, the Australian General staff then transferred the responsibility of Surveys and Mapping to the Permanent Forces. The unit raised to do that work was the Survey Section, Royal Australian Engineers. It was to comprise a licensed surveyor and two draughtsmen to be recruited in Australia, the four RE non-commissioned officers loaned by the British Government for two years. It was allotted for duty under the direction of the Australian Intelligence Corps but for discipline to be under the officer commanding the RAE in the District in which the Section was operating.

2.3. Four topographers, Corporal J. Lynch and Lance-Corporals E.F. Davies, R Wilcox and A. Barrett arrived in Melbourne on the S.S. Omerah on 11th April 1910. A Citizen Military Force officer Lieutenant J.J. Raisbeck was appointed to the Unit on the 16th April

1910 as Warrant Officer draughtsman with the honorary rank of Lieutenant. Warrant Officer G Constable took up duty on 1st June and Lieutenant W.L. Witham, formerly in the Surveyor-General's office, Adelaide on the 1st July 1910. This unit was the first Topographic Mapping organization to be formed in Australia. Sappers H. Rossiter and H. Roseblade RE arrived in Melbourne on the 6th May 1912. Later that year six topographers and two draughtsmen were enlisted in Australia. Lieutenant Quinlan was appointed in 1913. Most of the RE Surveyors extended their two year period of loan and ultimately transferred to the RAE.

2.4. The mapping programme was determined by the need for maps of training areas required for the forces enlarged by the compulsory training scheme, and for tactical maps for the defence of key points. It was necessary to divide the Section into groups which were placed under the administration of the headquarters of the 2nd and 3rd Military Districts (Sydney and Melbourne respectively). A subsection was based in Adelaide in 1913 and one in Perth in 1915. In 1914, five more Sergeants were appointed. It was then the policy to recruit men with enough technical knowledge and experience to warrant their promotion to Sergeant on enlistment. By this time the earlier recruits also had become Sergeants. The 1 Mile to 1 Inch (1:63,360 scale) maps of Perth and Fremantle were produced in 1913. The Rockingham Sheet was being compiled in 1915 as evidenced by two original Plane table sheets still held by 5 Field Survey Squadron. On the 1st July 1915, the Australian Survey Corps was formed with the transfer of Engineer personnel in the Survey Section to the new Corps. However, the Survey Section, Royal Australian Engineers was not abolished. It remained on the Army Establishment List with no Officers or soldiers posted to it. Early in the First World War volunteers for AIF service from the Survey Section, together with some prescribed trades in the Permanent Forces, were not accepted. One exception was SSM Shields who served in Palestine. Permission to transfer to the AIF was granted late in 1917. Lt Vance, Warrant Officer H Rossiter and Sgt. H.P. Clews of the WA Survey Section were attested into the AIF at Blackboy Camp WA on the 28th December 1917. Lt Vance, prior to the War had been engaged on acquisition surveys along the South Australian section of the Trans-Continental Railway and also on the Trigonometrical survey of the Australian Capital Territory. He was later to become Director of Military Survey. The volunteers were moved across from Melbourne, then to Sydney before embarking on the SS Whiltshire for Egypt. They eventually arrived in England at the end of April 1918. After a period at Southampton Survey Headquarters they were sent across to France where they undertook minor triangulation observations as the WA Australian Survey Section until the end of 1918. They all returned to

Melbourne and were transferred back from the AIF to the Permanent Forces in July 1919. They were posted to the Survey Section RAE, The Survey Corps being unmanned until 1932.

2.5. A Department of Home Affairs surveyor, Mr F.M. Johnston, who had been engaged on surveys for the Trans-Continental Railway in Western Australia and the proposed Henderson Naval Base, near Fremantle, enlisted in the AIF near the end of 1916. Allotted to Engineers he was engaged with the agreement of Colonel J.T.H. Goodwin, the Commonwealth Surveyor General, on some property surveys of benefit to the Army. These included surveys of Blackboy Hill Camp, an extension of the Northam Rifle Range and the site of the Kalgoorlie Drill Hall. At Southampton in the United Kingdom, between 17 March and 17 May 1919, a school was held for AIF personnel awaiting return to Australia, and wanting to become surveyors. In conjunction with this school, a refresher course was organised for those who were already surveyors. Johnston attended the refresher course and was later to become Commonwealth Surveyor General and Director of National Mapping.

2.6. Prior to the First World War the field survey technique was based on Plane Table using local cadastral surveys as control. The inherent errors in this control was proving unacceptable and led to the introduction of triangulation techniques of survey in 1914. The plane table was still the topographer's basic tool but control was established and/or adjusted using triangulation techniques to meet the required positional standards. Little, if any, activity was undertaken by the survey section RAE of the Australian Survey Corps in Western Australia between the two World Wars. In the Eastern States drastic re-trenchment occurred in the 1920's with the Section's strength down to twelve all ranks at one stage. In 1932 the Australian Survey Corps was remanned from the Survey Section RAE. From 1935 a build up again commenced with the Corps strength at the outbreak of the Second World War of fifty all ranks. Over this period significant developments had occurred in the fields of map compilation from aerial photographs, baseline measurement and triangulation adjustment. The Military Survey community kept abreast with these developments and was undoubtedly the Australian Pacesetter in the Geodetic survey and Cartographic fields.

**THE PRESENT STATUS OF THE CORPS UNITS IN WA AND HOW THESE UNITS
FIT INTO THE OVERALL CORPS STRUCTURE
by Capt Don Cocker.**

When the 5th Field Survey Squadron, Army Reserve Troop was raised on 1 March 1982, it already had a few members. Captain Fred Brown first paraded 13 Jan and Corporal Alan Rossow was the first OR to parade on 19 Jan.

The Officer Commanding was Major Pat Wood. He was followed by Majors Peter Bates-Brownsword, Chuck Cooper and John Greggs. The latter had the task of closing down the unit on 29 Feb 90. Thus ended 49 years of the Regular Army Survey in WA.

Capt Fred Brown and Lt John Willis both filled the position of Troop Commander ARes under 5 Fd Svy Sqn.

The T.S.M. position was filled by WO1 Tony Crane (ex RE), WO2 Mick Venn (ex ARA) and WO2 Alan Rossow (ex ARA).

When the ARes paraded as a sub unit of 5 Fd Svy Sqn in Mar 82 it comprised the following Ares members;

Capt Brown	Tp Comd
WO1 Crane	TSM
Cpl Rossow	
Cpl Michajlow	(ex ARA)
Cpl Ames	(ex ARA)
LCpl White	(ex ARA)
Spr Faithfull	
Spr Jones	
Pte Throssell	
Pte Weston	

In the first few years of the Tp they operated without an ARA Cadre as such. This task was shared by many ARA NCO's. In Nov 86 Sgt Lance Barrell was appointed as ARA Cadre followed by SSgt Cliff Webb Jan 88--89 and Sgt Barrell from Jan 89 until the current date.

The 2nd Topographical Survey Troop was raised on the Corps birthday in 89 and the first person posted in was Lance as the ARA Technical Adviser. The Troop continued as part of 5 Fd Svy Sqn.

On 24 Feb Capt Don Cocker was posted in as the first Troop Commander under 1 Topographical Survey Squadron, a 1 Div Unit based in Brisbane.

The Officer Commanding of 1 Topo Svy Sqn is Maj Dave Sankey and is of course ARA located in Brisbane.

On 1 Mar 90 the new unit commenced and the members of the Ares of 5 Fd Sqn were posted into it. On this the first day of the new era the unit comprised of the following Ares members;

Capt Cocker	Tp Comd
WO2 Rossow	Snr OR
SSgt Barrell	ARA Tech
SSgt Smith	ARA QMS (RAAOC)
SSgt Sargeant	(RAAOC)
SSgt Faithfull	
Sgt Avino	
Sgt Jones	
Sgt Spittles	
Cpl Bullock	
Cpl McNally	(Aust INT)
LCpl Wride	Prom Cpl Mar 90
Spr Ferguson	Prom LCpl Aug 90
Spr Jones	Prom LCpl Aug 90
Spr Lee	
Pte Marlow	(RAAOC)
Spr Piercy	
Rec Barrett	

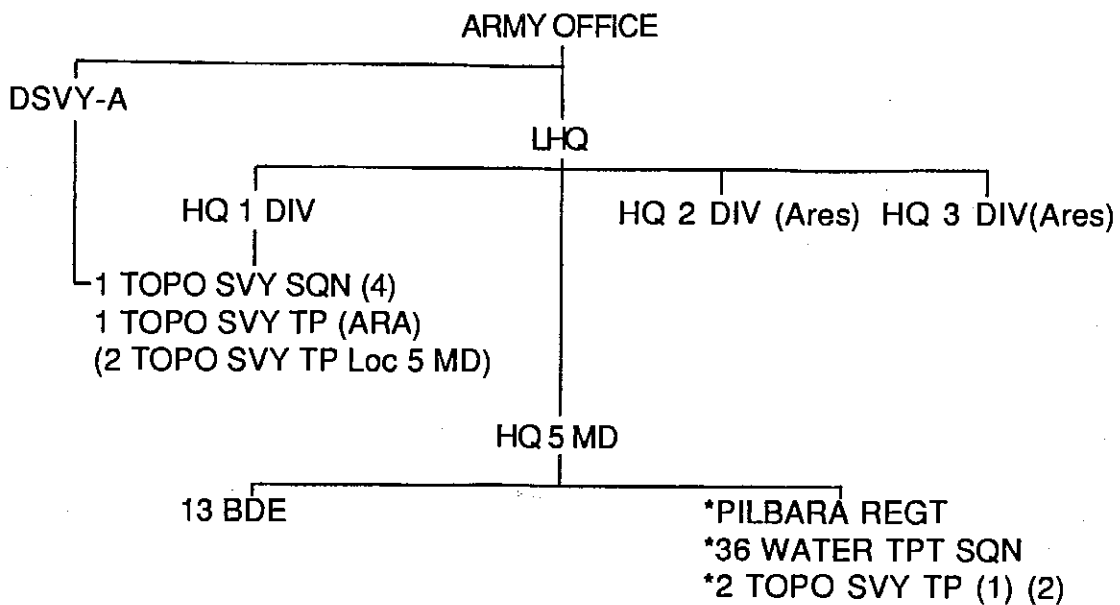
MARCH IN

Pte Lawler	FTS (RAAPC)
Rec Wride	
Spr Bowman	Ex ARA
Rec Gray	
Rec Tomic	
Pte Goble-Barrett	(RAAOC((ex 5ARRU)
Rec Higbid	

MARCH OUT

Rec Wride	Disch
Cpl Wride	5TRG GP
Spr Bowman	5TRG GP
Rec Tomic	11/28 BN
Cpl Bullock	Disch

The unique position of 2 Topo Svy Tp with its Technical Control through 1 Topo Svy Sqn in Brisbane and Admin Comd, HQ 5 MD is shown by the following diagram with only the main points detailed.



- * LAND COMD UNITS
- (1) UNDER COMD 1 TOPO SVY SQN
 - (2) UNDER COMD FOR LOCAL ADMIN HQ UNITS
 - (3) UNDER COMD LHQ FOR LAND COMD UNITS
 - (4) UNDER TECH CONTROL DSVY-A

The units main tasking in the training year 90-91 is to;

- a) Produce a map as part of 1 Div Deployment Area Study at 1:1,6000,000 of the West Kimberly with overlays showing:
 - 1) Population distributon
 - 2) Vegetation
 - 3) Elevation layers
 - 4) Land Use
 - 5) Police and Regional Boundries, Defence Establishments
 - 6) Points of entry (Airfields, ports etc.)
- b) Train to meet the mapping needs of 13 Bde in the field with rapid response mapping.
- c) Develop skills for standard mapping.
- d) Develop military skills.

I hope that in the next report to be able to tell you of the successful completion of some if not all these aspects.

MISCELLANEOUS MATTERS

from the President

In this edition of WEST LINK we have begun to include for publication, articles received from members .

Pat Wood has submitted a history of the Corps in WA which will be published in three parts. It is acknowledged that there are some gaps in the history and there could be some errors, however that should encourage correspondence and hopefully lead to a complete and correct history of the Corps' activities in WA.

Jo Mazzarol has contributed an article on an incident in the desert East of Kalgoorlie where some Aborigines were found who were in dire straits through lack of water. Again some detail may need clarification and your assistance would be helpful.

Don Cocker produced an informative paper on the present status of the Corps units in WA and how those units fit into the overall Corps structure.

There are some incidents and events for which we hold scant information and your help is needed. These are;

a. In 1960 a party of Surveyors were aboard the HMAS Diamantina to provide Survey support for the mapping of Islands on the North West Coast. Who was there and what did they do?

(I know that Acting Bosun's Mate Bob McKenna was there, because he told me the story of the ship's cutter beaching, full of water, and when ordered to commence bailing, informed the seaman in charge that bailing seemed a waste of time because although he, Bob McKenna, was standing in the centre of the boat he was actually on the beach; the bottom had completely gone. Ed)

b. In the early 60's some brave and resolute survey personnel helped to capture a fugitive at Madura. It is understood that this involved keeping the said fugitive at the Madura Public Bar for quite a few hours until the police arrived. The truth please!

(Although I was not involved with the drinking spree I well remember the publican giving at least six of our fellas each \$10.00, (or was it ten pounds) to buy drinks for the fugitive and when the police arrived they found him out like a light on one of the motel beds. I can't vouch for the state of health of any of our fellas. The ruffian had travelled along the railway line in a stolen Holden until he was north of Madura, then headed more or less south, passing close to where we were camped on an old aerodrome. Ed)

Continued on page 18

PERSONAL NEWS

1. Trevor Bottomley and his wife have returned to Perth in civilian life and are living at Edgewater. Trevor has gained employment at the RAC (WA) as a cartographer.

2. Stan Campbell recently visited Perth to see his daughter, Jacinta, and wishes to be remembered to all his friends.

3. Doug and Judy Gay have also returned to live in WA and Doug is working for Kevron as a Navigator/Photographer. There will not be much of WA that Doug has not flown over before.

4. Hugh and Olive Taylor are preparing for their son Neil's wedding in December and then a trip to the USA in April 91 to visit Neil who has been posted to Washington DC. Hugh has been sidelined on occasions of late due to a bad back but he and Olive are looking forward to their travels and we wish them well.

5. Ran into Mrs Margaret Nolan (widow of the late Col JK Nolan) the other day. She suffered a fairly severe stroke two years ago but has made a good recovery. She walks with the aid of a frame, however she can still drive and has retained her sense of humour. We hope that she recovers completely in the near future.

6. Nevis and Betty Cherry have recently returned from a lengthy tour of the UK and Ireland where they tracked down some long lost relatives and visited the land of Nevis's ancestors. We welcome them back and look forward to hearing of their travels.

From page 17

c. At Esperance in 1965 a large amount of beer was stolen from the back of the ration truck, while an alert Survey Corps Piquet slept in the back of the truck. Who and how??

d. During operation Easy Rider in 1965 a large number of cans were scattered along the North West Coast Highway after a trailer overturned. It is understood that two members were left behind to clean up the mess, Who were they and how many cans did they salvage?

Any comments or information on the published articles of the events listed above would be welcomed and should be sent directly to Jo Mazzarol, Barry Parker or Don Taylor.

PERSONNEL GLIMPSES

by Frank Cohen

Being one of the Elder Statesmen of the Corps, I was asked if I could recall any older members who would be worth mentioning in these pages. One member who came to mind was - no not a high ranking officer - but a sapper. Frank Mosley (alias Bardia Bill) or (hydraulic Frank; he would lift anything) joined as early as 1944 after serving in the middle east campaign, consequently the nick name Bardia Bill.

Whilst being a very likeable fellow, Frank had the habit of being "light fingered". On one occasion whilst voyaging north on the "M.V. Koolinda" our section was coerced into unloading stores at various posts (what would today's W.W.F. union say about that?) Now the Army seemed to be on the lower end of the ration scale with preference being given to the Air Force, then the Navy, then the Army, when any special rations were to be handed out. Things like tinned fruit, special jams, fresh fruit etc. were hard to come by, Somehow the Air Force's allocation of "goodies" seemed to get mixed up with the Survey units supply. Thanks to Frank's "help" our unit feasted better than expected in later weeks.

When we were camped at Derby, Frank went out pig shooting. A lot of feral pigs roamed the area and were getting into our kit bags after the soap and what nots. Well back came our intrepid hunter with a fine specimen over his shoulder who then promptly started to "dress" his trophy. It was not until one of his helpers noticed a brand on the pig's hind quarters that it was realised that Frank had shot one of the stations prized pigs. The Survey unit had to pay the station owner compensation for the loss of his pig.

Later on, Frank became batman to a Captain Clark, one of our Survey officers. As time passed Captain Clark's turnout was getting scruffier daily. His clothes were not the sort worn by officers, whilst Frank was strutting around with immaculate shirts, trousers and shoes etc.. "It's about time you and I had a kit inspection Sapper Mosley" said Captain Clarke. All the clothing was eventually returned to its respective owners.

There may be more memorabilia in later issues.

Kind regards

Frank Cohen

ROLL CALL AT THE 1990 ANNUAL GET TOGETHER

Don and Margaret Taylor
Alan and Karen Rossow
Marlene Lawler
Colin Ferguson
Mike Garratt
Pat and Pom Wood
Don Musgrove
Trevor and Sue Bottomley with Erica and Donna
Doug Grey
Ralph Talbot Smith
Barry and Helen Parker
Alex Laing
Jo and Betty Mazzarol
Frank Cohen
Don and Yvonne Cocker
Noel and Fiona Clutterbuck
Ray and Dora Sergeant
Helen Kemp
Eric and Jane Clutterbuck
Cedric and Nanette Clutterbuck
Hugh and Olive Taylor
Lee Bextrum
Pat Griffiths
Leon Griffiths
Bill Spittles
Ken Coulson
Keith Breheny
Neville Smith-Ryan
Hannah Breheny
Stuart Breheny
Gail Breheny
Eric Brook
Gwynne Brook

ALAN

A story of a little Aborigine from the fading memories of Jo Mazzarol, who was there.

The first we knew about him was when someone observed there were natives hovering on the camp boundary. We ignored them for a while then probably through sheer desperation, they broke from their usual polite manner and entered the camp uninvited.

I will never forget the physical appearance of the small boy. He was so dehydrated that the skin hung in ropes from the inside of his little four year old legs. He, his mother and a young girl of about fourteen, it was hard to determine ages, came and stood before me in a line, the woman saying something in a quiet voice, over and over again. I didn't understand but thought the polite thing to do was to at least offer them a drink little realising the drama about to unfold.

I offered the little boy a mug full of water, which he downed with commendable restraint considering the circumstances. The little girl was next, followed by the mother. As the mother got her share the boy began to cry, I think because he could see that it was going to take a little longer than he was prepared to wait for his turn to come around again. After taking turns with my mug, they were eventually all topped up and we invited them to have lunch with us.

Having them in camp presented a problem of both hygiene and decorum. We were camped at Neil's Junction, kind of south of Warburton Mission and east of Laverton, miles from anywhere, in relatively primitive conditions; using a hole for a toilet which maybe they wouldn't understand, and a million flies followed them everywhere.

Eventually a camp was made for them a little way away with a fire, some blankets and food. They seemed to like all the tinned food we had grown very tired of, at least they didn't complain about anything.

After a while I began to try to communicate with the mother. I asked what the little boy's name was and she said it was Jkadatrookbidgemalanbokama. I swear it's true. Well at least that was what I think I heard. She seemed to emphasis the 'alan' bit, so I called him Alan. Whenever it was meal time I would yell out, 'Alan' and he would come running over to collect the preopened cans of snaggers, goldfish, or what ever else it was we had tons of still to eat, plus tea, powdered milk, sugar and water.

I also asked her if she had a man or were there any other Aborigines about. She seemed to understand me which proved her more intelligent than I and said something, pointing back the way they had come and bringing her arm down in a circular sweeping motion, which the Missionary, who eventually came to take them to Cundalee explained, meant that she was telling me the others were dead.

We were sitting at Neil's Junction with the trucks, main tentage, camping gear and surveying equipment, waiting for the work to be completed further north around the Warburton Mission and the survey team to either come back to us or go on west to Laverton. By 'we' I mean myself, three attached drivers from 22 Construction, the helicopter pilot Darcy Newles and the engineer Jim Chapman, who incidently was a champion axeman from Queensland.

Just to digress with a little story about Jim Chapman. A couple of years earlier when we were north of the Drysdale River I went out to chop a tree down to enlarge the clearing to make it safer for the freshly arrived helicopter to take off and land. Off I went with my axe and started swinging. I might as well admit now before you hear it from someone else that my tree felling procedure was to spend all afternoon bruising the trunk so badly that it fell down on its own. Anyway after a couple of hours of me softening up this trunk Jim wandered over and asked if he could help, so with great reluctance I handed over the axe. He looked at the state of the edge of the blade, which was rounded and gapped, and asked me if that was the best axe we had and I assured him it was, so after he stopped laughing he started chopping and in half a dozen swings a great wedge of wood seem to hop out of the trunk and the bloody tree fell to the ground. I couldn't believe my eyes. Mind you, I had weakened it earlier,

To get back to the main story, we spent a few days with Alan and his family. Sitting on the ground around the camp fire of an evening, communicating after a fashion. I remember showing Alan my torch. He'd never shown much emotion about anything and his attitude about the torch was the same, but he did pick it up and seemed interested in switching it off and on. I tried to explain how it worked by taking a battery out and placing it on the tip of my tongue which he imitated, experiencing the tingling sensation from the current. Also I got some paper and coloured pencils and we drew pictures of all sorts of things. There was a slight breeze I remember and the papers kept blowing away. Alan didn't do anything about stopping it, so I showed him how to put a handful of sand on the sheets to weigh them down. He and the girl came with me a couple of times in the Rover and trailer, on firewood collecting forays. On one trip, the front of the vehicle fell into a deep hole and Alan, who was sitting on the front seat fell

forward and hit his head on the dashboard. He must have hurt himself quite a bit because he started to cry that time too. I took his head in my hands and had a look but there were no cuts or anything so I ruffled his hair and roughed him up a bit and he seemed to settle down. He appealed to me because the way he carried himself. A natural little warrior without any affectation.

When our visitors first arrived, Alan was naked, the mother was wearing minimal but adequate covering, as was the young girl. I had a bag of clean coloured cloth which we used for cleaning rags when servicing the vehicles. Sometimes there was quite good clothing to be found in amongst the rags and this time was no exception. We found a pair of shorts and gave them to Alan. At first he was a bit self conscious and refused to have anything to do with them but after a while he put them on and began to wear them around.

Eventually we contacted the Mission at Cundalee through the Flying Doctor Service and the Mission sent a Land Rover to collect them a couple of days later.

Talking to the fellow from Cundalee was very interesting. He said that the natives at the Mission had told of some Aborigines coming out of the Northern Territory. He said they just seemed to know very clearly what was happening. It was a kind of thought telepathy. Because he could speak the language, he was also able to tell us what had happened to Alan's little group.

They had come down from the Centre on their way to Cundalee and had actually passed through Neil's Junction while our advanced survey party were there. From what I was able to piece together, our people were busy preparing for a trip, or setting up camp, anyway far too busy to take any notice of a bunch of Abo's, probably thinking, as we did, that they were just wandering about when in fact they were already desperate for water then. I heard that they went up to a few of our fellas speaking in their own language obviously requesting water but were ignored.

As bad as this sounds it must be told that some time earlier, when we were travelling between Laverton and Warburton Mission, we were told by the Mission Authorities not to give any Aborigines a lift in our vehicles, not to give them any tobacco or any rations because they were trying to discourage them from going Walkabout to Laverton of a weekend to buy tobacco, lemonade and other stuff. So, not getting any water, Alan's group kept going south trying to reach water at the railway line but things got so bad that they decided half way to turn back and take their chances with us again.

In the original party it appears there were three other people, an elderly couple and a young lad about the same age as the girl. The elderly couple collapsed on the way back (they were never seen again) so, as is the custom with the Aborigines, the remainder divided up what little they had, built them a fire and left them. A bit further on, the boy wandered off into the bush and disappeared also. Later I accidentally stumbled on where he left his small bundle, just off the side of the track, about half way between Neil's Junction and the railway line. It consisted of a small, grubby fruit tin with some matches and a bit of the side of the box in it and a coolamon, which is a piece of curved bark that the Aborigines carry things about in and also use to winnow seed, and that was all. I was told the tin was used to gather water from lengths of roots from a particular plant, which the Aborigines were familiar with. The roots are stood upright in the tin and enough water drained from them over night to to sustain one person for a little while. I had the coolamon here at home for a number of years until it was eventually lost. It was well worn when I picked it up.

Just before the party departed for Cundalee, Alan distinguished himself by turning on the tap to the full water container in the rescue Landrover losing most of the contents before anyone realised that it was happening.

I had a lot of time for Alan because of his manly bearing even though he was only four and I sometimes wonder what happened to him and the others.

If any one was in that advance party and can add to this story it would make interesting reading.

ROYAL AUSTRALIAN SURVEY CORPS ASSOCIATION (WA INC) 75TH ANNIVERSARY DINNER

On Saturday 30th June the Royal Australian Survey Corp Association (WESTERN AUSTRALIA) held a dinner to celebrate the 75th Anniversary of the Royal Australian Survey corps.

The function was held at Williams Seafood Restaurant in North Fremantle, which incidently, won the Gold Plate award in WA for 1990.

The meal was excellent and well presented. It was great to see many 'old' and familiar faces, along with their wives, gather to celebrate such an historic milestone in the Corps history.

Those who attended represented over 50 years of Corps history. Members from World War Two such as Cedric Clutterbuck and Nevis Cherry with their wives Nan and Betty. Those who enlisted post war like Hugh Taylor with Olive, Pat and Pom Wood, Jo and Betty Mazzarol, then the late 50's and early 60's by Lofty and Angela Keene, Spike Jones. Tom and Pauline Sawyer, John and Val Williamson, Barry and Helen Parker. Then the next decade like Jim and Nola Roberts, Bill and Helen Kemp, Mick and Annette Venn; along with the presently serving members of the Corps and ARes who included Don and Yvonne Cocker, Lance and Sandy Barrell, Ian and Pat Bootland and Ray (Noddy) and Dora Sargeant.

Nevis Cherry who is also in his 75th year was asked to cut a Corps Birthday Cake which was followed by a toast to the Corps with the 75th Anniversary Port which was rushed to us by Mick Bodman from the School of Survey. Thanks Mick.

It was a great night and we are indebted to Barry Parker for shouldering the bulk of the organisation.

President



Nevis Cherry cutting the birthday cake



Dora and Ray Sargeant



Margaret and Don Taylor with Pat Bootland



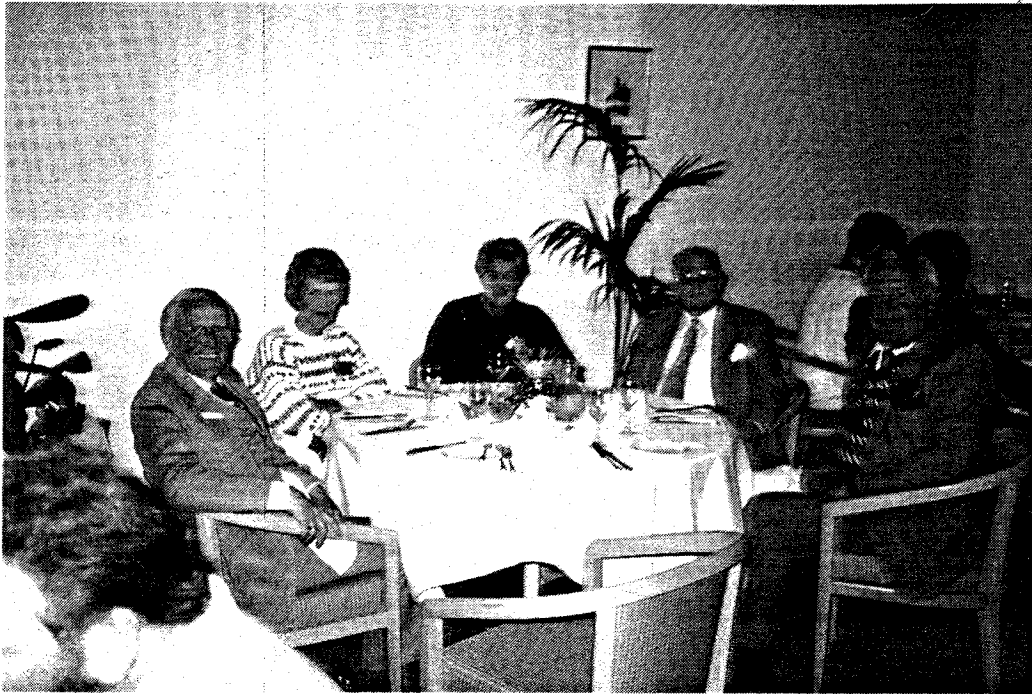
Nola and Jim Roberts, Yvonne and Don Cocker
with Helen Parker



Pat and Ian Bootland, Cliff and Dianne Webb



Keith and Gail Breheny, Annette and Mick Venn



Nevis and Betty Cherry, Nannette and Cedric Clutterbuck
with Frank Cohen



Pom Wood with Neville and Dorothy Smith-Ryan



Olive Taylor with Pat Wood



Eric Clutterbuck with Beverley and Peter Bowen



Jo and Betty Mazzarol with Hugh Taylor



Dianne Webb with Lance and Sandra Barrell

Schindler's Ark

Thomas Keneally

On the face of it, lusty, worldly Oskar Schindler was a most unlikely missionary. He had moved to Cracow in the wake of the Nazi occupation of Poland to profit from the rich pickings to be had by the bold and by the Aryan. A big man in every sense, with an appetite to match, for success, for women, and for drink, Schindler, a Sudetan German, thrived. He rapidly established himself as a powerful Cracow figure, head of a major industrial concern moulded from the ruins of threatened Jewish-run businesses, a dabbler in the black market – partly to keep himself and his mistresses in the manner to which they were accustomed, partly for the hell of it – and a man with influential connections extending far outside Cracow. Schindler was a man who knew how to play his cards.

Yet this was the man whose deeds by the end of the war were to have earned him a place on Mount Zion as one of the honoured dead of the Israeli nation. On the Avenue of Righteous People a tree bears his name. Schindler was to become a champion of the oppressed, the protector of the Jews, at a time when prudent people thanked their lucky stars for their birthright and kept their eyes averted.

Drawn from authentic records and the author's own extensive research this outstanding book recounts the days of Nazi-occupied Poland and the story of an extraordinary man's mission to save the Jewish people.

ROYAL AUSTRALIAN SURVEY CORPS ASSOCIATION MEMBER'S LIST

NAME	ADDRESS	TEL
BOOTLAND	3/55 Fifth St.,	6157
BOTTOMLEY	54 Havest Loop	6027
BOULTER	223 Scott St.,	6105
BOWEN	8 Rosea Close	6057
BRAY	33 Nalpa Way	6025
BREHENY	2 Corcoran St.	6025
BROOK	30R Leake St.	6011
BROWN	29 Brendon Way	6018
CAVILL	56 Sandgate St.,	6151
CHERRY	8 Abroihos Close	6155
CLIFFORD	21 Rudall Way	6025
CLUTTERBUCK	357 Hardy Rd.	6105
CLUTTERBUCK	4 Carob Place	6024
CLUTTERBUCK	18 Glennon Way	6155
COCKER	151 Calais Rd.	6109
COHEN	121 North St.	6010
CONSTANTINE	RMB 9020A Sth Coast Hwy	6330
CRADDON	PO Box 328	6155
EDDY	6 Cullen St.	6008
EDWARDS	4 Batavia Way	6152
FIRNS	59 Thompson Rd.	6159
GAY	89 Beasley Rd.,	6155
GOBLE-GARRATT	16 Redwood Land	6155
GRIFFITHS	1 Gairlock St.	6153
HANCOCK	Sun City C'van Pk Swan Dve	6530
HARMS	3 Bounty Place	6027
HELVAR	51 Wedgewood Drive	6027
JENKINS	12 Fagan St.	6060
JOHNSTON	163 Leach Highway	6156
JONES	2/23 Yoevil Cres.	6157
JONES	1/46 Colin Rd.,	6019
JONES	54 Glendale Ave	6022
KEENE	15 Radstock St.	6018
KEMP	15 Moffat Place	6024
Ian	Bicton	339 4961
Trevor	Edgewater	306 1877
Bob	Cloverdale	277 1036
Peter	Maida Vale	454 6219
Phil	Duncraig	447 9699
Keith	Duncraig	448 0232
Eric	Peppermint Grove	384 9093
Fred	Karrinyup	349 7182
John	South Perth	367 8076
Nevis	Shelley	457 0612
Leo	Padbury	402 1590
Noel	Cloverdale	277 7072
Eric	Greenwood	342 2181
Cedric	Rossmoyne	457 4651
Don	Wembley Downs	341 5257
Frank	Swanbourne	384 7094
Peter	Albany	09 841 6523
Clive	Willeton	457 4157
Peter	Shenton Park	381 2616
Frank	Manning	450 3945
Brian	North Fremantle	335 6825
Doug	Leeming	
Mike	Willeton	
Leon	Applecross	364 8019
Archie	Geraldton	
Barry	Ocean Reef	307 2447
Geoff	Edgewater	306 1509
Syd	Yokine	349 6909
Lyall	Melville	337 9231
Bob	Bicton	339 4415
Fred	Scarborough	341 7391
Richard	Hammersley	448 3437
Rod	Karrinyup	447 0534
Bill	Warwick	

LLOYD	Ken	86 Rosedale St.	Floreat Park	6014	
MAZAROL	Jo	52 Cleveland St.	Dianella	6062	276 6170
MCKENNA	Bob	37 Nicholas St.,	Gosnells	6110	389 6678
MEAD	Brian	8 Barridale Dve	Kingsley	6026	409 8282
MUSGRAVE	Don	47 Hibiscus Rd	Maddington	6109	
PARKER	Barry	75 Simpson Drive	Padbury	6025	401 3857
POLLARD	Derek	94 Poynter Dve	Duncraig	6023	448 5885
ROBERTS	Jim	1 Chidley Pl	Rockingham	6168	527 5508
ROSSOW	Alan	25 Wolsley Rd.	East Fremantle	6158	339 2638
SARGEANT	Ray	10 Paris Way	Karrinyup	6018	445 3995
SAWYER	Tom	5 Mardoon Close	Darlington	6061	299 7039
SHAW	Stewart	122 Gloucester Cresc	Shoalwater Bay	6169	592 1185
SMITH-RYAN	Neville	702/406 Stirling Hwy	Cottesloe	6011	384 9562
TAYLOR	Hugh	51 Eric St.	Cottesloe	6011	384 4431
TAYLOR	Don	22 Callistemon Ave.	Greenwood	6024	447 0465
THACKRAH	Kevin	36 Woodsome St	Mt Lawley	6050	271 1841
TILL	Alf	21 Cromarty Rd.	Floreat	6014	387 5113
UWINS	Bev	12 Kexby St.	Balcatta	6021	
VENN	Mick	29 Waitara Cresc.	Greenwood	6023	448 0407
WEBB	Cliff	8 Naipa Way	Duncraig	6023	448 3176
WILLIAMSON	John				
WILLIS	John	Post Office Box 630	Kununurra	6743	
WOOD	Pat	39 Hendon Way	Hammersley	6022	342 8981
WOODS	Dennis	172A Anzac Terrace	Bassendean	6054	279 2055

NEWS RELEASE

BEN HUMPHREYS

MINISTER FOR VETERANS' AFFAIRS

9033 21 August 1990

BUDGET 1990 - INFORMATION FOR VETERANS

The Minister for Veterans' Affairs, Ben Humphreys, today announced in his Budget statement that services to the veteran community will be maintained.

Mr Humphreys said that despite the need for restraint in Government spending, the \$5.1 billion overall budget ensures adequate funding for health and benefits programs.

"Reorganisation of health resources and modifying benefits procedures means we can meet veterans' needs with greater efficiencies," Mr Humphreys said.

"The Government's continuing commitment to veterans, war widows and their dependants is reflected in improvements to some key quality of life benefits."

Mr Humphreys gave the following examples of improvements and changes to benefits, with answers to some important questions.

• SUPPLEMENTARY BENEFITS

Veterans' supplementary benefits for the loss of physical or mental well-being or incapacity caused by eligible service will increase by approximately 8 per cent. Supplementary benefits will be automatically indexed in line with the CPI in future budgets.

WHEN WILL THESE CHANGES TAKE EFFECT?
From 20 September 1990.

• ARTIFICIAL LIMBS

Eligible veterans and war widows will continue to receive their artificial limbs free of charge through the Department of Veterans' Affairs Health Program. They will not have to contribute to the cost of limbs under the Artificial Limbs Scheme which replaces the Free Limbs Scheme from 1 September 1990. The changed scheme requires contributions towards costs from those who can afford to pay and greater justification of replacement limbs.

WILL ELIGIBLE VETERANS OR WAR WIDOWS HAVE TO PAY?

No. They are covered under the Department of Veterans' Affairs Health Program.

• WAR WIDOW'S PENSION

Automatic granting of the war widow's pension will be extended to widows of veterans in receipt of the Extreme Disablement Adjustment (EDA) or who have subsequently been granted EDA at the time of their death. The War Widow's pension will be automatically granted following the death of the veteran or member.

WHEN WILL THIS CHANGE TAKE EFFECT?

It will be retrospective to 22 December 1988 when EDA was introduced.

• DEFENCE SERVICE HOMES

Extension of portability of Defence Service Homes (DSH) loans to all DSH borrowers who had DSH loans outstanding on 9 December 1987, the previous cut-off date. DSH loans will also be made available to assist in meeting the cost of entry charges for retirement villages.

WHEN WILL THESE CHANGES TAKE EFFECT?

These changes are subject to the passage of enabling legislation in the Budget Sitting. Introduction of the legislation is expected before the end of 1990. More details will be available then.

WILL ANY DVA PENSIONER LOSE FROM THIS CHANGE?
No. In fact those pensioners who do not use 60 prescriptions in the period 1 November 1990 to 31 December 1991 will gain additional pension.

• BENEFICIARY TRANSPORT SERVICES

Changes are being made to beneficiary transport arrangements to treatment services which will improve efficiency and reduce costs. Changes include better use of the Government vehicle fleet, taxis and other on call transport outside standard hours. Greater use of aircraft will be made for country trips.

WHAT TRANSPORT SERVICES WILL BE AVAILABLE FOR ENTITLED VETERANS AND WAR WIDOWS?

Entitled veterans and war widows will continue to receive a transport service appropriate to their needs. Despite the changes, the medical needs of the individual will remain the Department's first consideration in choosing future transport for veterans and war widows.

• CAMPAIGN MEDALS-BASED DETERMINATION OF SERVICE PENSIONS

Determining qualifying service for service pension eligibility will be simplified and changed to a campaign medals-based approach for some veterans. As the effective date is 12 months from the date of announcement, veterans have 12 months to test their eligibility under the current rules.

TO WHICH VETERANS WILL THE NEW METHOD OF DETERMINATION APPLY?

The campaign medals-based approach will be applied to claims from Australian and Commonwealth veterans and Australian mariners only. Practical difficulties prevent this approach being used in the case of significant groups of allied veterans and mariners, and their eligibility will continue to be determined under the "incurred danger" test as under the current legislation.

• STOMA THERAPY SUPPLIES

From 1 October 1990 Stoma therapy supplies will be issued free through Stoma associations, rather than outpatients clinics at Repatriation General Hospitals. Provision of supplies through these associations and the additional assistance from the local Stoma support group should give beneficiaries a more locally convenient and comprehensive service. Membership fees will be reimbursed by the Department of Veterans' Affairs.

• RESIDENT CONTRIBUTION FOR LONG-TERM PSYCHIATRIC PATIENTS AND ANZAC HOSTEL RESIDENTS

In common with veteran and civilian pensioner nursing home patients, long-term psychiatric patients will in future be required to pay a contribution towards board and lodging costs commencing on 1 January 1991. Similar contribution measures will apply to residents of Anzac Hostel, Victoria.

HOW MUCH WILL I BE REQUIRED TO PAY?

The contribution will be set at the same rate as that applying to pensioner nursing home residents. This is currently \$20.75 per day which is 87.5% of the maximum single rate service pension plus rent assistance. The contribution will be indexed to increases in Veterans' Affairs and Social Security pensions.

WHAT ARRANGEMENTS WILL BE MADE FOR PAYMENTS?

Residents affected by the change will be individually notified before 1 January 1991 and suitable payment methods will be determined.

• REPATRIATION PHARMACEUTICAL BENEFITS

Under the Repatriation Pharmaceutical Benefits Scheme eligible veterans will continue to be supplied drugs free of charge. However, under the Minimum Pricing Policy, only the lowest priced brand drug will be made available to the eligible veteran free of charge. If a higher priced brand is prescribed the difference in price will be met by the veteran.

WILL THE LOWER PRICED DRUGS BE AS GOOD?

Yes. As drugs they are no different, they have the same active ingredients.

• PHARMACEUTICAL ALLOWANCE

From 1 November 1990, service pensioners using their Pensioner Health Benefits (PHB) cards and war widows using their Dependant Treatment Entitlement Cards (DTECs) will be charged \$2.50 per prescription to a maximum of \$150 for prescriptions issued to a family unit (\$130 maximum in future calendar years). Any subsequent pharmaceuticals on prescription will be issued free of charge. To offset the charge, a fortnightly allowance of \$5.00 per family unit (\$2.50 each per married person) will be paid initially as a pension allowance and from 21 March 1991 as a general increase in relevant pensions.

WILL I HAVE TO PAY TO JOIN AN ASSOCIATION?
DVA will accept financial responsibility for your membership and postage fees.

• VETERANS' REVIEW BOARD

Applications to the Veterans Review Board (VRB) not finalised within two years will now lapse. This will eliminate the backlog and improve the processing of claims which are being pursued diligently by applicants.

WILL THIS AFFECT CLAIMS CURRENTLY IN THE VRB SYSTEM?

Yes. All claims over two years old will be affected. However, the VRB will allow a 28-day "please explain" period.

• RENT ASSISTANCE THRESHOLD

The rent assistance threshold will be raised from \$40 to \$50 per fortnight, for a single pensioner or pensioner couple. Raising the threshold will ensure that rent assistance remains focussed on those paying higher rents, and more realistically reflects the current level of rental in the market place. All rent assistance recipients will be required to verify rent paid, on an annual basis.

HOW WILL THIS CHANGE AFFECT MY RATE OF RENT ASSISTANCE?

Some pensioners may incur a small reduction in their rent assistance payments, up to \$5 per fortnight. Because this decrease occurs when the CPI increase is applied to Service Pensions, no pensioner will actually receive less cash in hand.

• COMMONWEALTH AGENCIES DATA MATCHING

In common with all income support agencies, DVA is required to take part in the tax file number arrangements and will notify veterans when such information is required.

HOW WILL THE TAX FILE NUMBER BE USED?

The tax file number will be used to match against pension and taxation records from other agencies. This will ensure that all taxpayers and veterans receive only the rate of pension to which they are entitled.

• DEEMING INTEREST PROVISIONS

Arrangements are being introduced to encourage pensioners to maximise their total income and assets. From 1 March 1991 cash or deposits not attracting a realistic interest rate will be deemed to earn an interest rate of 10 per cent per annum. The first \$2,000 will not attract deemed interest. Assets given away after 21 August 1990 will be subject to deemed interest at a rate of 10% per annum. Any money (including bonds and debentures) loaned by a pensioner after 21 August 1990 will have a minimum interest rate of 10 per cent automatically maintained as income.

